

The cyclin-like protein, SPY1, regulates the ER α and ERK1/2 pathways promoting tamoxifen resistance

Rosa-Maria Ferraiuolo¹, Janice Tubman^{1,3}, Indrajit Sinha³, Caroline Hamm^{1,2}, Lisa Ann Porter¹

¹Department of Biological Sciences, University of Windsor, Windsor, ON N9B 3P4, Canada

²Windsor Regional Hospital, Windsor, ON N8W 1L9, Canada

³Acenzia Inc, Tecumseh, ON N9A 6J3, Canada

Correspondence to: Lisa Ann Porter, **email:** lporter@uwindsor.ca

Keywords: *Cdk, cyclin, cell cycle, estrogen, tamoxifen*

Received: February 15, 2016

Accepted: February 12, 2017

Published: February 21, 2017

ABSTRACT

The Ras/Raf/MEK/ERK pathway conveys growth factor and mitogen signalling to control the phosphorylation of a plethora of substrates regulating proliferation, survival, and migration. The Ras signalling pathway is frequently associated with poor prognosis and drug resistance in various cancers including those of the blood, breast and prostate. Activation of the downstream effector ERK does not always occur via a linear cascade of events; complicating the targeting of this pathway therapeutically. This work describes a novel positive feedback loop where the cell cycle regulatory factor Spy1 (RINGO; gene *SPDYA*) activates ERK1/2 in a MEK-independent fashion. Spy1 was originally isolated for the ability to stimulate *Xenopus* oocyte maturation via a MAPK-signalling pathway and is known to override apoptosis triggered by the DNA damage response. We demonstrate that mammalian Spy1-mediated ERK activation increases ligand-independent phosphorylation and activation of estrogen receptor α , correlating with a decrease in tamoxifen sensitivity. This could define a novel druggable mechanism driving proliferation and resistance in select cancers.

INTRODUCTION

Overall 5 year survival rates for breast cancer have increased by almost 20% since 1975, largely because of improved screening and drugs developed against estrogen signalling (ie. tamoxifen) and the Her2/Neu receptor (ie. trastuzumab) [1]. Despite these advances, a subset of patients either progress to, or initially present with, cancers that are unresponsive to current targeted therapies [2, 3]. As such, breast cancer remains the second leading cause of death from cancer among women [1]. Determining the mechanisms regulating the initiation and/or progression to a drug resistant status represents a current challenge in the breast cancer field.

This work focused on a cell cycle protein coined Spy1 (Speedy, RINGO) (gene *SPDYA*) that is elevated in a number of human cancers, including invasive carcinoma of the breast, as well as cancers of the liver, brain, and blood [4–12]. In the breast, Spy1 levels are elevated during proliferative stages of mammary development (puberty and pregnancy) and forced expression can drive mammary tumorigenesis [13]. Spy1 is one member of

a family of ‘cyclin-like’ proteins that are expressed and degraded in a cyclic manner and are able to directly bind and activate the cyclin dependent kinases (CDK)s [14–16]. Spy1 functions in an atypical manner to classical cyclins in that it binds to both the G1/S and G2/M CDKs and directs phosphorylation of non-canonical CDK substrates [12, 17, 18]. Activation of the CDKs by Spy1 occurs independent of phosphorylation within the T-loop and dephosphorylation on defined inhibitory residues [17]. Further, Spy1 directly binds and promotes the degradation of the CDK inhibitor, p27^{Kip1} [8, 19]. Hence, Spy1 supports rapid progression through the cell cycle even in the face of senescence and apoptotic-inducing stimuli [4, 5]. This suggests a mechanism by which Spy1 overrides cell-cycle induced apoptosis caused by therapeutic agents, which could support drug resistance.

Proliferative programs in the breast, both during normal development and breast cancer, are in part dictated by signalling through the steroidal estrogen receptor α (ER α). ER α changes into an active conformation upon binding to the ligand estradiol (E2) [20]. Classical ER activation promotes receptor homodimerization, nuclear

translocation and subsequent DNA binding to estrogen response elements (EREs) to regulate the expression of various genes [21]. 'Non-classical' genomic signalling also exists where the E2-ER α complex binds transcription factors to regulate genes lacking an ERE, like Cyclin D1 [22–25]. ER dimers, activated by E2 or other growth factors, can also interact and form complexes directly with G-proteins, receptor tyrosine kinases, and non-receptor tyrosine kinases [26]. Non-classical ER signalling can thereby trigger signal transduction pathways such as Ras/mitogen-activated protein kinase (MAPK) and phosphoinositide 3-kinase (PI3K/Akt) [27]. Collectively, ER α works via these diverse mechanisms to promote breast cell growth and survival [20, 28].

Tamoxifen functions by competitively binding to the ligand binding domain (LBD) of ER α , altering its conformation such that it can no longer bind to E2, hence, preventing E2 proliferative signalling [29]. The binding efficiency of tamoxifen can be altered by the phosphorylation status of residues within ER α capable of inducing ligand independent signalling [30, 31]. Phosphorylation on serine (S) 118 by extracellular signal-regulated kinases (ERK)1/2 is one prominent example of such a modification. S118 phosphorylation promotes hypersensitivity to E2 and decreases ER α affinity for tamoxifen [30, 32–35]. ERK1/2 is the final kinase at the end of the Ras/MAPK signalling cascade, succeeding Ras, Raf and MEK activation. Given that non-classical ER α signalling can activate a MAPK cascade, this represents a feedback mechanism enforcing activity of the ER [23, 24, 36–40].

The Ras-Raf-Mek-ERK cascade is hyperactivated in approximately 30% of human cancers; a large percentage characterised by a mutation in either the Ras or Raf genes [41, 42]. Constitutively activated MEK1/2 is frequently seen in cancer cell lines, contributing to increased cell survival, migration and transformation [42]. Overexpression and hyperphosphorylation of ERK1/2 has been seen in various cancers, including hepatocellular carcinoma and breast cancer [41, 42]. Pharmacological intervention upstream of ERK1/2 has received considerable focus; however, to date clinical results are largely underwhelming, with preclinical and clinical documentation showing a development of acquired resistance shortly after receiving treatment [43, 44]. Resistance is largely associated with re-activation of ERK1/2 signalling [45]. As such, specific inhibitors of ERK1/2 have become a focus over the last 5 years. Use of an ERK1/2 inhibitor can overcome acquired resistance to both BRAF and MEK1/2 inhibitors in melanoma, breast and colon cancer cell lines [45, 46]. This exciting data has led to the introduction of the ERK1/2 inhibitor into phase I clinical trials for solid tumours [45, 47, 48]. Understanding the activation of all components of this pathway influences the successful intervention of a large number of cancers, including breast cancer.

RESULTS

Spy1 is upregulated downstream of the estrogen receptor

Spy1 is upregulated downstream of c-Myc and developmental expression patterns mimic that seen with c-Myc [13, 49]. Given that c-Myc is upregulated downstream of ER α [50]; we used ER α -positive MCF7 breast cancer cells to determine whether Spy1 protein is also regulated downstream of ER α . Spy1 protein levels were elevated over a period of 1–6 hours following E2 treatment (Figure 1A). Protein levels were also elevated in response to E2 following reconstitution of ER α in ER negative HEK-293 cells (Figure 1B and 1C). These data indicate that upregulation of Spy1 protein levels occurs downstream of the estrogen signalling pathway. Overexpression of Spy1 in ER-positive MCF7 cells demonstrates a significant increase in the phosphorylation of the ER at S118 (Figure 1D). To determine if this was due to enhanced proliferation through G1/S, the G1/S cyclin, Cyclin E1, was overexpressed and phosphorylation of ER-S118 measured (Figure 1D). Elevated levels of Cyclin E1 had no significant change in ER-S118 phosphorylation.

Spy1 is capable of promoting the activation of the MAPK pathway when injected into unfertilized *Xenopus* oocytes [16], and S118 is phosphorylated by several kinases including ERK1/2 of the MAPK pathway [30, 33, 51]. We measured the activity of ERK (phospho-T202/Y204; pERK) in the presence of overexpressed Spy1 and found a significant increase in the level of phospho-ERK (Figure 1D), this was also seen in other cell systems (Supplementary Figure 1A–1B). While a slight increase in phosphorylation was also seen with Cyclin E1 overexpression, this difference was not statistically significant. These data support that activation of ERK, seen downstream of Spy1 overexpression, is not a generalized effect due to cell proliferation. To determine if Spy1 is a necessary mediator of ERK activation, HEK-293 cells were infected with shRNA lentivirus targeting two separate regions of the Spy1 mRNA (shSpy1.1, shSpy1.2). shRNA against Cyclin E1 was also used to address the essentiality of classical cyclin-CDK activation (shCyclinE) and a pLKO-shScrambled control (pLKO). Both of the shSpy1 constructs significantly decreased endogenous activated ERK levels (Figure 1E and Supplementary Figure 1C); this effect was not noted with shCyclinE treatment despite successful knockdown (Figure 1E and Supplementary Figure 1C; left panel representative blot). Spy1 effects were reversed by a rescue construct, showing specificity of the sh-targeting (resSpy1; Figure 1E). These results support that Spy1 is a required component for activation of ERK1/2 in this cell culture system.

To determine whether one of ERK1 or ERK2 was preferentially affected by Spy1, bands were separated to easily differentiate the family members and blotted with

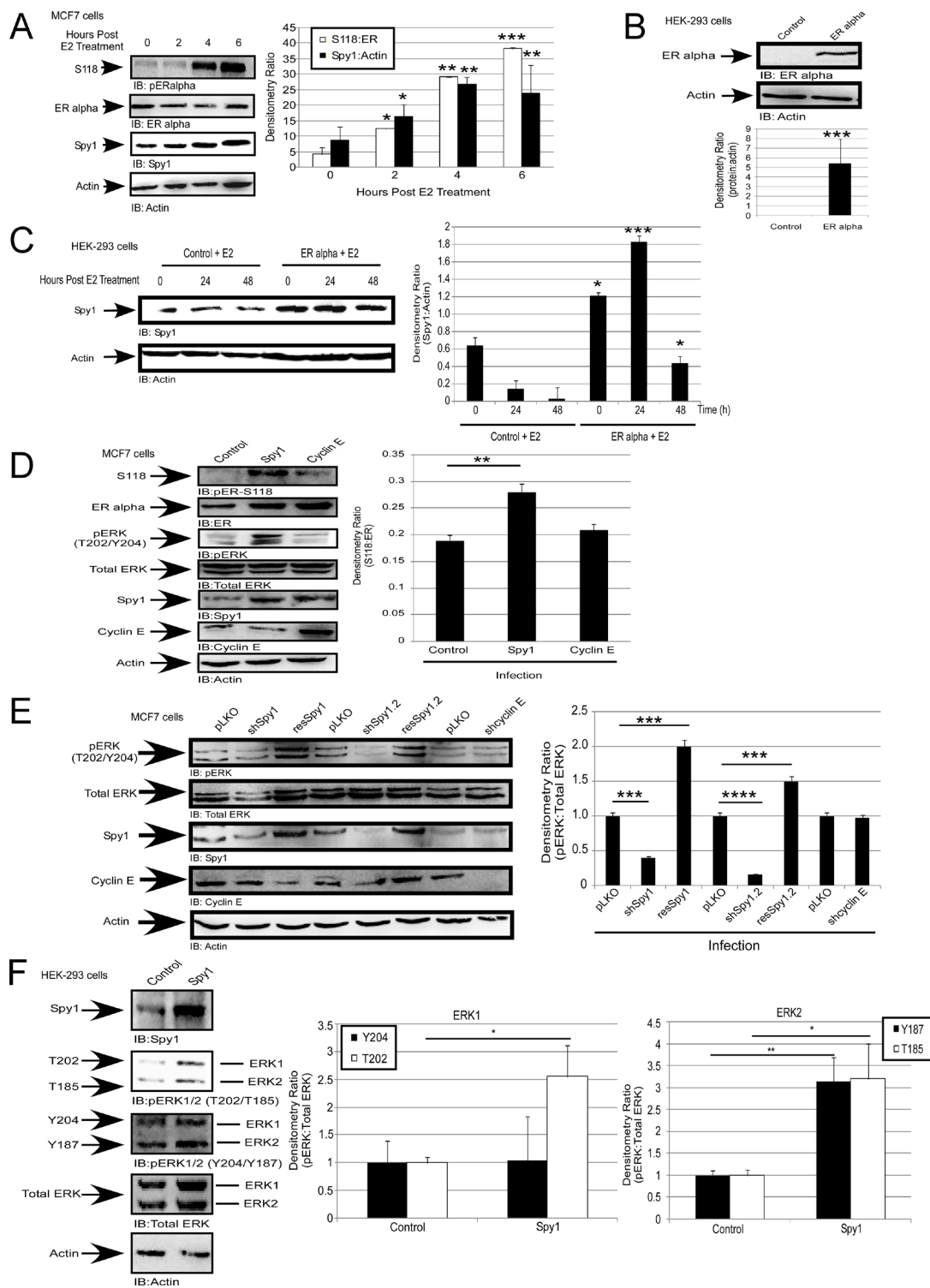


Figure 1: Spy1 is upregulated downstream of the estrogen receptor. (A) MCF7 cells were treated with 50 nM of estradiol (E2) or vehicle control (DMSO) over the indicated time course. Representative blot (left), densitometry averages Spy1 and S118 (right). (B–C) HEK-293 cells were transfected with pEGFP-C1-ERα. B-Representative blot confirming expression. C-Treatment with 50 nM of E2 over the indicated time course. Representative blot (left), densitometry averages for Spy1 (right). (D) MCF7 cells infected with control, Spy1, or Cyclin E1.(E) Cells were infected pLKO, 2 constructs of shSpy1.1, shSpy1.2, shCyclin E, or rescue vectors, followed by SDS-PAGE and IB. Representative blot (left), densitometry averages for relative ER-S118 (right). (F) Representative blot (upper panel) showing phosphorylation status of ERK1 and ERK2 using phosphor-specific antibodies for pERK threonine or tyrosine sites. Lower panel depicts quantification of both sites for either ERK1 (left) or ERK2 (right). Error bars reflect SE between at least 3 separate experiments. Student's *t*-test was performed; **p* < 0.05, ***p* < 0.01, ****p* < 0.001.

phospho-threonine or phospho-tyrosine specific antibodies to recognize ERK1-T202/ERK2-T185 and ERK1-Y204/ERK2-Y187 (Figure 1F). Our results show that Spy1 significantly increases the level of phosphorylation on both ERK1 and ERK2 with statistically consistent results for the threonine site in each protein. For the remainder of the experiments we focused on the average phosphorylation status of these proteins using the general T/Y-ERK phospho-specific antibody.

Spy1 activation of ERK1/2 is dependent on CDK activation

Using a previously characterized Spy1-CDK non-binding mutant (Spy1-D90A) [17], we questioned whether the direct binding between Spy1 and the CDK is essential for activation of ERK1/2. Transient transfection with wild-type Spy1 shows a significant increase in the activation of ERK1/2 (Figure 2A), and a significant increase in proliferation, as compared to control and D90 transfected cells (Figure 2B). These data support the hypothesis that the activation of ERK1/2 is dependent on Spy1-mediated CDK activity. It is notable that altered migration of the Spy1-D90A mutant on SDS page gel has been consistently reported in the literature [17]. Spy1 can bind to both CDK1 and CDK2 [6, 12, 17]. To determine which CDK is most influential on Spy1-activated ERK, cells were transfected with Myc-tagged Spy1 and low levels of either an HA-tagged CDK1 or CDK2 dominant negative (DN) vector (CDK1 DN or CDK2 DN), or relevant controls. The concentration of DN vector transfected did not significantly impair growth alone; however, both CDK1 and CDK2 DN vectors significantly impaired the ability of Spy1 to activate ERK1/2 (Figure 2C). Collectively, this data supports that Spy1-mediated phosphorylation of ERK requires at least one of the CDKs to be present and bound.

Spy1-mediated ERK1/2 activation is MEK-independent

In the breast, Spy1 levels are elevated by MAPK/ERK and c-Myc signalling to promote proliferation and override differentiation stimuli [13, 16]. In the presence of U0126, a MEK1/2 inhibitor, we see a decrease in endogenous pERK1/2, as well as a significant decrease in overall endogenous Spy1 protein levels, as seen previously [13]. In cells overexpressing Spy1, U0126 does not significantly reduce the ability of Spy1 to activate ERK1/2 (Figure 3A), suggesting that Spy1 activates ERK1/2 independent of MEK. Using a MEK1/2 DN in combination with Spy1 overexpression, pERK continues to be significantly activated, further supporting a MEK-independent mode of activation (Figure 3B). Another level of regulation of ERK1/2 phosphorylation is through the steady state removal of phosphorylation by the relevant phosphatases. Four major phosphatases

regulate ERK1/2; PP2A, MAPK Phosphatase (MKP)1, MKP2, and MKP3 [52]. We questioned whether Spy1 expression could alter the expression level of any of these phosphatases. As seen in Figure 3C, neither Spy1 or Cyclin E1 overexpression significantly decreased the protein levels of these phosphatases, Spy1 actually increased PP2A and MKP2 protein levels. It is intriguing to hypothesize that this is a cellular response to retain steady state due to enhanced activation of ERK1/2.

Spy1 activation of ERK is dependent on Ras and Raf

To determine whether alternate upstream activators of ERK1/2 are important in Spy1-mediated effects we tested the consequences of Spy1 overexpression in the presence of Ras and c-Raf inhibitors, Farnesyl Thiosalicylic Acid and GW5074, respectively. When c-Raf or Ras are inhibited Spy1 is no longer able to activate ERK as compared to the control, indicating that the regulation of pERK by Spy1 requires both Raf and Ras activation (Figure 4A). Moeller et al. (2003) showed Ras activation requires the inhibition of p27. Binding of p27 to Grb2 blocks the interaction of Grb2 with the guanine nucleotide exchange factor, SOS, thereby, inhibiting the formation of the Grb2/SOS complex, which is required to activate Ras [53]. Spy1-CDK2 can bind to and directly inhibit p27 [8, 19]. This work shows that Spy1 inhibits p27 levels in the absence and presence of Raf/Ras inhibitors (Figure 4A, hollow bars), demonstrating that this aspect of Spy1 activity is intact and that ERK-mediated effects reside downstream of p27 degradation. To investigate the importance of the direct Spy1-p27 interaction, a Spy1-p27 binding mutant (R170) was utilized [54]. Spy1-R170 prevents the downregulation of endogenous p27 seen with Spy1-WT as previously published (Figure 4B) [54]. Interestingly, when cells were infected with R170 lentivirus there was no statistical increase in ERK phosphorylation as seen with Spy1-WT (Figure 4C and Supplementary Figure 2). Collectively, these data show the Spy1-CDK complex requires the activation of Ras and depends on the direct interaction with p27 to significantly increase pERK protein levels.

Spy1 overexpression may function through RIPK2

Receptor-interacting serine-threonine kinase 2 (RIPK2) is phosphorylated and activated through Ras-activated Raf kinase [55]. One established downstream substrate of RIPK2 is ERK1/2 *in vitro* and *in vivo* [55]. To determine whether the effects of Spy1 overexpression on ERK1/2 could be mediated through RIPK2, cells were transfected with Myc-tagged-Spy1 followed by infection with lentivirus packaging either scrambled control shRNA (pLKO) or shRNA targeting two different regions of the RIPK2 mRNA (shRIPK2.1, shRIPK2.2) (Figure 4D). In the presence of RIPK2 knockdown, a decrease in pERK1/2

levels was seen in comparison to Spy1 overexpression alone (Figure 4D). These results demonstrate that Spy1-CDK1/2 can activate ERK1/2 indirectly through the Ras-Raf-RIPK2 pathway.

Increased levels of Spy1 reduce sensitivity to tamoxifen

Spy1 is found at elevated levels in aggressive forms of breast cancer [12]. Given the role of ERK signalling in driving tamoxifen resistance [33, 56], we tested the effect of Spy1 levels on the tamoxifen

response. ER positive MCF7 cells were infected with pEIZ-Spy1 or empty vector control (pEIZ) (Figure 5A). Cells were treated with 100 nM tamoxifen for 24 hours and subjected to the trypan blue exclusion assay. Spy1 overexpression significantly increased cell number as compared to pEIZ control in untreated cells, as has been previously published [57]. Interestingly, when tamoxifen was added, Spy1 continued to drive cell proliferation, but pEIZ control populations failed to proliferate (Figure 5A), supporting that elevated levels of Spy1 reduced sensitivity to tamoxifen. We implemented a zebrafish xenograft model to elucidate whether Spy1

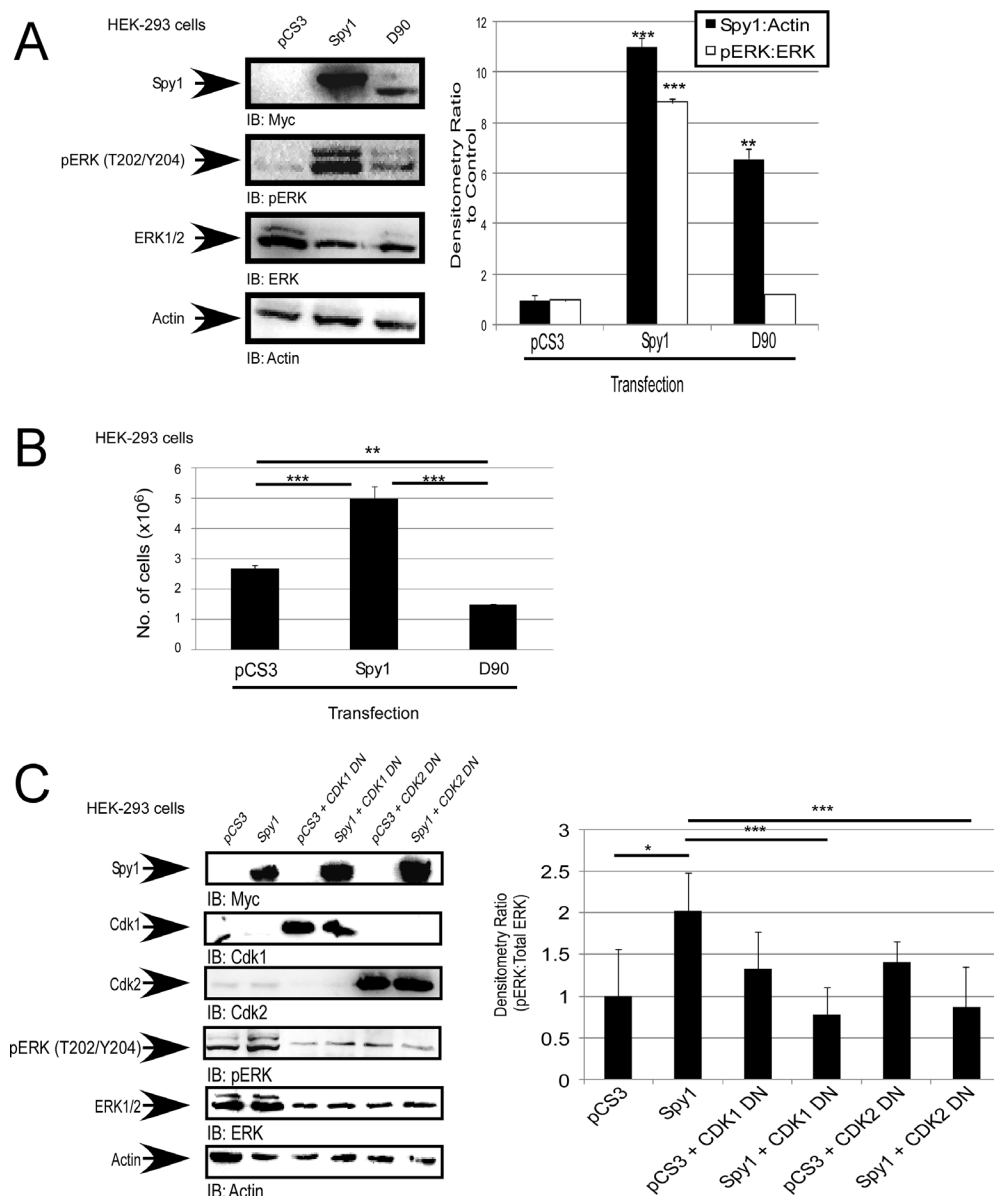


Figure 2: Spy1-mediated ERK phosphorylation is CDK dependent. (A–C) Hek-293 cells were transfected with the indicated constructs (along top of each representative blot and X-axis of each graph, including the empty vector control (pCS3)). (A) Representative blot (left). Densitometry for Spy1 or pERK over multiple experiments (right). (B) Trypan blue exclusion assay was performed after 24 hours of incubation, total cell numbers presented. (C) Representative blot (left). Densitometry (right) as represented on Y-axis. Error bars reflect SE between at least 3 experiments. Student's *t*-test was performed; **p* < 0.05, ***p* < 0.002, ****p* < 0.001.

levels can increase or decrease sensitivity to tamoxifen *in vivo*. The use of zebrafish xenograft models in cancer and drug therapeutics discovery has been recognized and validated as a suitable alternative to mammalian models, with several important advantages [58]. Drug toxicity studies show reliable screening in the zebrafish

and that this model is a suitable predictive alternative to mammalian systems [59, 60]. Furthermore, key cell cycle mediators, tumour suppressors, oncogenes, and estrogen-responsive genes and activation of downstream pathways of estrogen signalling are all highly conserved in the zebrafish [61]. Additionally, injection of human breast

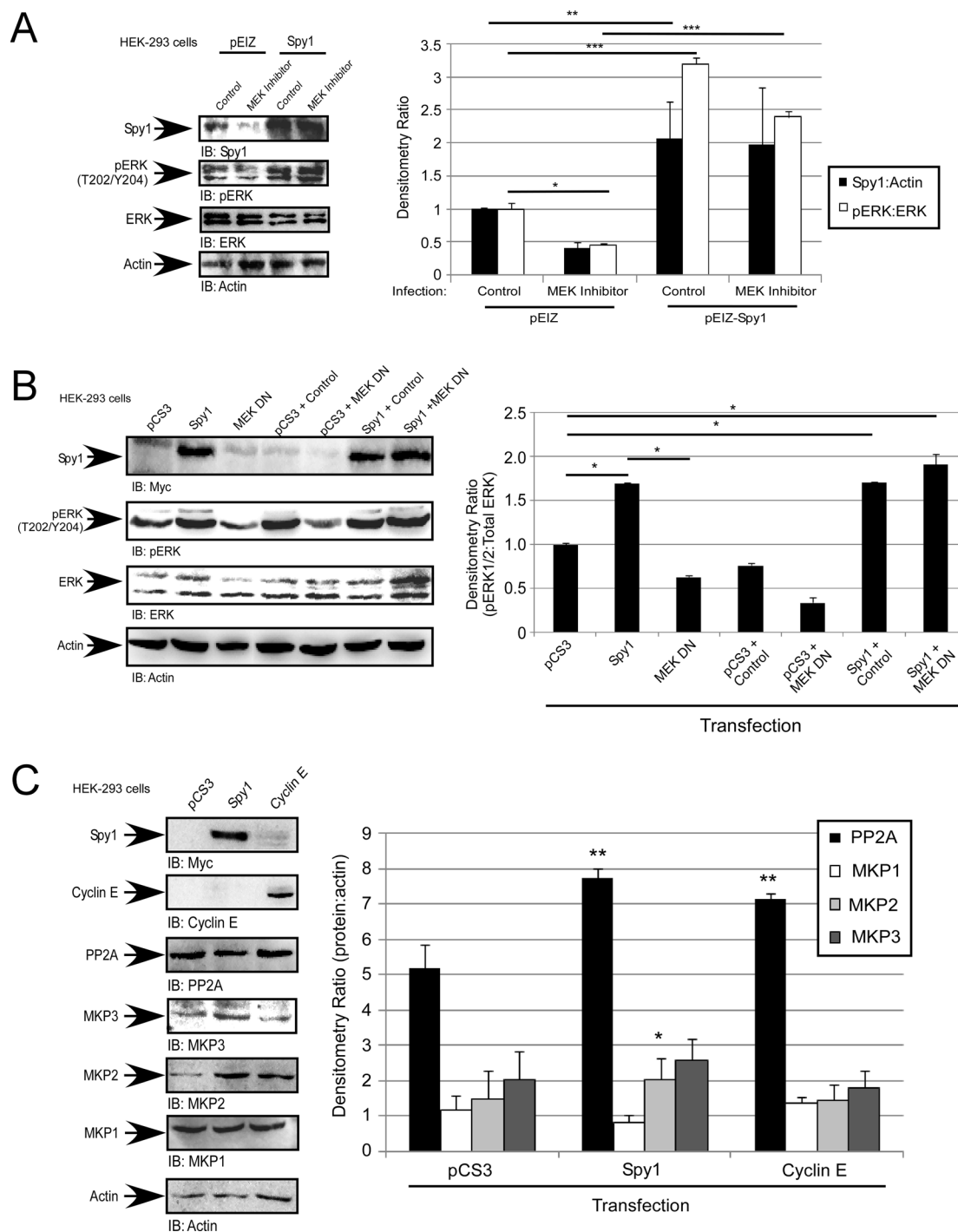


Figure 3: Spy1-mediated ERK phosphorylation is MEK-independent. (A–C) HEK-293 cells were infected (A) or transfected (B and C) with the indicated constructs (along top of each representative blot and X-axis of each graph). (A) Cells were treated with 10 μ M U0126 or vehicle control (DMSO). (A–C) Representative blot (left). Densitometry (right) as represented on Y-axis or text box. Error bars reflect SE between at least 3 experiments. Student's *t*-test was performed; **p* < 0.05, ***p* < 0.002, ****p* < 0.001.

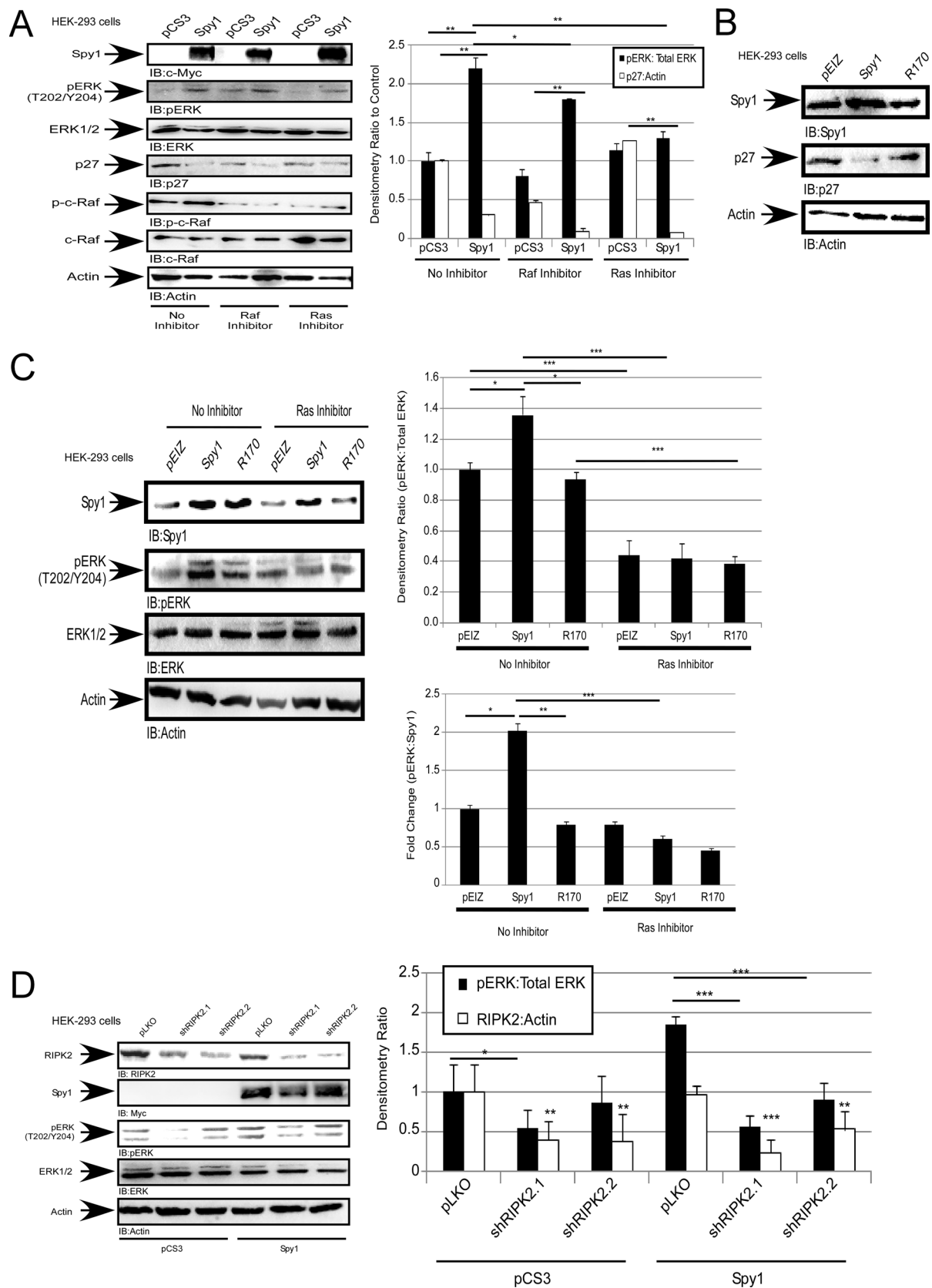


Figure 4: Spy1 activation of ERK1/2 is dependent on Ras and Raf. Hek-293 cells were transfected (A) or infected (B–D) with constructs indicated at the top of each blot (left). (A, C) were treated with inhibitors as indicated on the panels. (A, C–D) Densitometry of relative protein levels conducted over all experiments (right). Lower right panel (C) fold change ratio of pERK:Spy1 protein levels. Error bars reflect SE between at least 3 experiments. Student's *t*-test was performed; **p* < 0.05, ***p* < 0.01, ****p* < 0.001.

cells followed by therapeutic drug testing in zebrafish is more efficient than using immunocompromised mice since the adaptive immune system does not develop until 14 days post fertilization (dpf) and, hence, tumour responses can be studied in the presence of residual immune competence [62]. The zebrafish model also allows for high throughput testing of drug combinations in a short time frame, being both cost and time efficient. To validate the model, fluorescently labelled MCF7 or tamoxifen resistant LCC9 cells [63] were injected into embryos at 48 hours post-fertilization (hpf) and treated with tamoxifen for 24 hours (Supplementary Figure 3). Fish were imaged and quantified before and after treatment to determine the changes in number of tumour foci per fish, as quantified by total fluorescence. Tumour foci at 24 hours post-treatment (hpt) demonstrate that while the MCF7 cells respond to treatment, the LCC9 cells are resistant to tamoxifen treatment (Supplementary Figure 3). Sensitive MCF7 cells were then infected with pEIZ control or pEIZ-Spy1 vectors and injected into zebrafish embryos (Figure 5B). Vehicle control (DMSO) or tamoxifen was administered 48 hours post-implantation (hpi) and tumour foci were imaged for each fish at 0 hpt and 24 hpt. The fold change in tumour foci was recorded for each individual embryo to control for variation in injected cell number (quantification lower graph). Tamoxifen had a significant effect on overall cell numbers in control infected cells, which may be a combination of cytostatic and cell death effects. However, when Spy1 was overexpressed there was a significant decrease in sensitivity to tamoxifen treatment *in vivo* (Figure 5B; lower panel).

Targeting Spy1-directed ERK activation sensitizes cells to tamoxifen

We have demonstrated that Spy1 activates ERK, and subsequent phosphorylation of ER α -S118 in a MEK-independent, but Ras-dependent, fashion (Figures 3–4). To test whether Spy1 effects on tamoxifen sensitivity were mediated through this pathway, MCF7 cells were treated with tamoxifen in the presence or absence of the MEK inhibitor U0126. When Spy1 levels were elevated, even in the presence of tamoxifen, the levels of pER α -S118 were significantly increased as compared to control and Cyclin E1 overexpression and this occurred in a MEK-independent fashion (Figure 6A–6B). We then measured the effect of direct inhibition of ERK1/2 on Spy1-mediated effects on pER α -S118. MCF7 cells overexpressing Spy1 or control were treated with 10 μ M ERK1/2 inhibitor (SCH772984), either alone or in combination with 100 nM tamoxifen (Figure 6C). Spy1 significantly increases pER α -S118 in control situations but not in the presence of the ERK inhibitor (with or without Tamoxifen). Cells were then counted for viability after treatment using the trypan blue exclusion assay. We show that the use of the ERK1/2 inhibitor alone significantly reduces the number of viable

cells in both control and Spy1 overexpressing cells (Figure 6D). Importantly, Spy1-mediated proliferation was not abrogated by tamoxifen alone but ERK inhibition prevented Spy1-mediated effects on growth (Figure 6D; tamoxifen lanes).

Collectively, these data show that Spy1, an atypical cell cycle protein expressed at elevated levels in many human cancers, alters the post-translational status of the ER and abrogates response to hormone therapy through ERK1/2 activation. Novel therapies focusing on the direct inhibition of ERK1/2 in patient populations harbouring elevated levels of Spy1 may represent a novel therapeutic direction for both treating drug resistant patients and preventing/decreasing the incidence of resistance in ER-positive patients.

DISCUSSION

In breast cancer estrogen can independently regulate the expression and function of the proto-oncogene c-Myc followed by a rapid activation of the G1 CDK, CDK2, to induce cell cycle progression [25, 64, 65]. Previous reports have perplexed that following estrogen treatment there is little or no change in the levels of Cyclin E, CDK2 or in the formation of cyclin E–CDK2 complexes prior to entry into S phase [66]. This work demonstrates that the atypical cyclin partner for CDK2, Spy1, is transiently upregulated downstream of activated ER α . This reveals a novel pathway for exploration important both to normal development and a host of pathologies. It is interesting to note that a shift in the mobility of Spy1 was seen upon the addition of E2. Whether this is due to a post-translational modification on Spy1 will require further examination. Additionally, we have shown that Spy1 can induce a unique activation of ERK1/2 that may in part dictate ER-mediated proliferation in some ER+ breast cancer cells.

It is important to note that post-translational modification of the ERK1/2 complex is a transient and highly dynamic process [67]. Our data demonstrates that at any specific time breast cancer cells with elevated levels of Spy1 have higher activated ERK1/2 as measured by a general phospho-antibody. Our data further suggests that this is indirect, introducing even more variability in the dynamics of the event. Further investigation into the specific phosphorylation sites on each ERK isoform showed a significant increase in the level of phosphorylation on both sites of ERK2 (T185 and Y187), but only one site of ERK1 (T202). More work would be required to determine if there is any site specificity. It is enticing to consider that perhaps Spy1-CDK mediated signalling could have some direct effects on the post-translational status of the MAPK pathway or direct effectors. Interestingly, Spy1-CDK activation of ERK is unique to Spy1 in that Cyclin E overexpression did not demonstrate a statistically significant change in ERK activation over multiple repetitions. It is notable that we have seen variability in the effects of Cyclin E on ERK

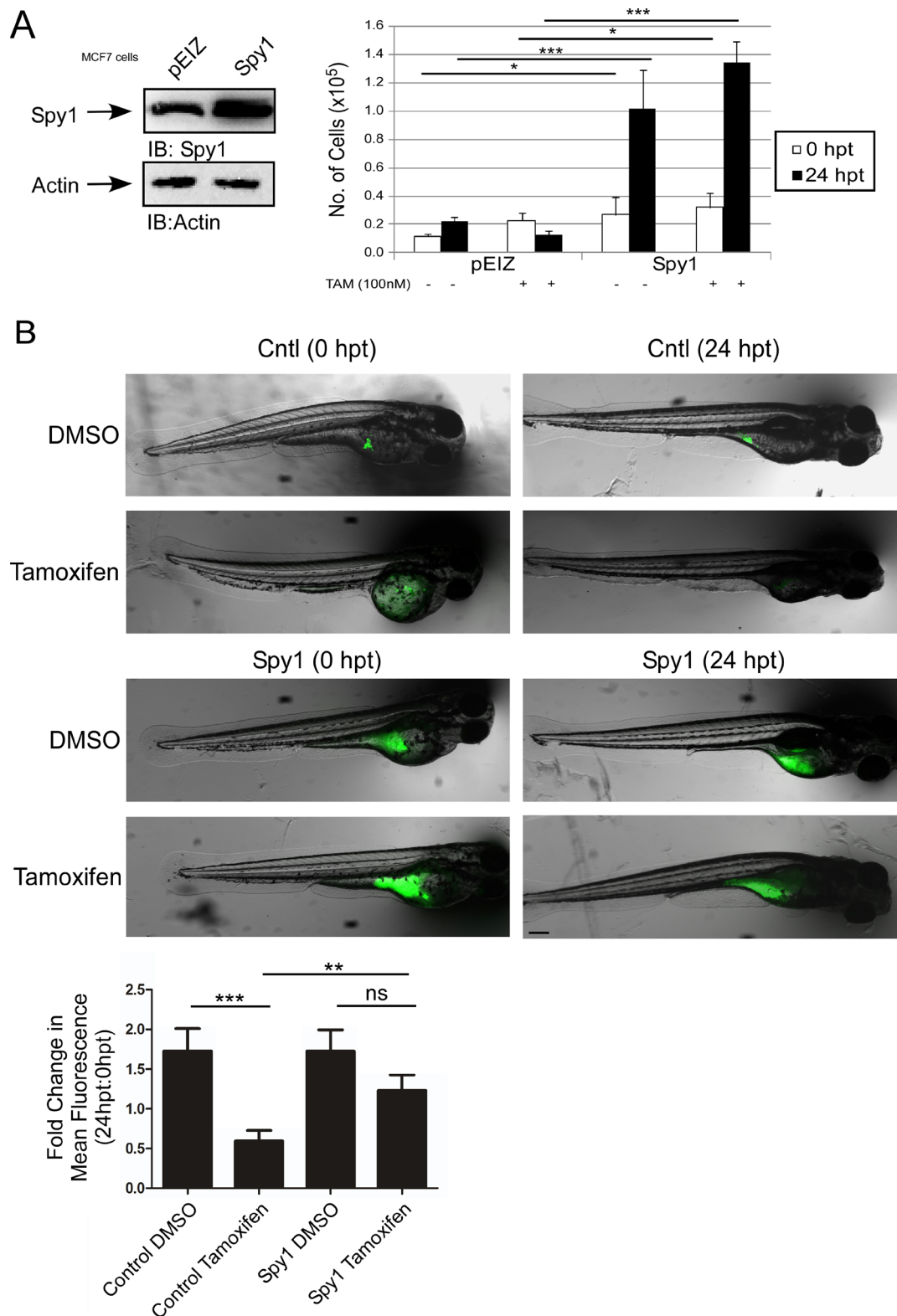


Figure 5: Spy1 levels affect tamoxifen response *in vivo*. (A) MCF7 cells were infected with indicated constructs (along top of representative blot and X-axis of graph). Trypan blue exclusion assay was performed over indicated time course in the presence or absence of tamoxifen. Error bars reflect SE between triplicate experiments. (B) Representative images of injected zebrafish larvae expressing either empty control vector (top panel) or Spy1 overexpression vector (bottom panel) before (0 hpt) and after (24 hpt) treatment with either DMSO or 10 μ M tamoxifen. *The same fish is depicted at 0 and 24 hpt for each condition. Scale bar = 200 μ m. Graph representing the mean fold change in foci, as quantified by fluorescence as compared to 0 hpt. $n = 28-46$ fish/treatment (excluding mortalities). Student's *t*-test was performed; ns = not significant, ** $p < 0.01$, *** $p < 0.001$. Scale bar = 200 μ m.

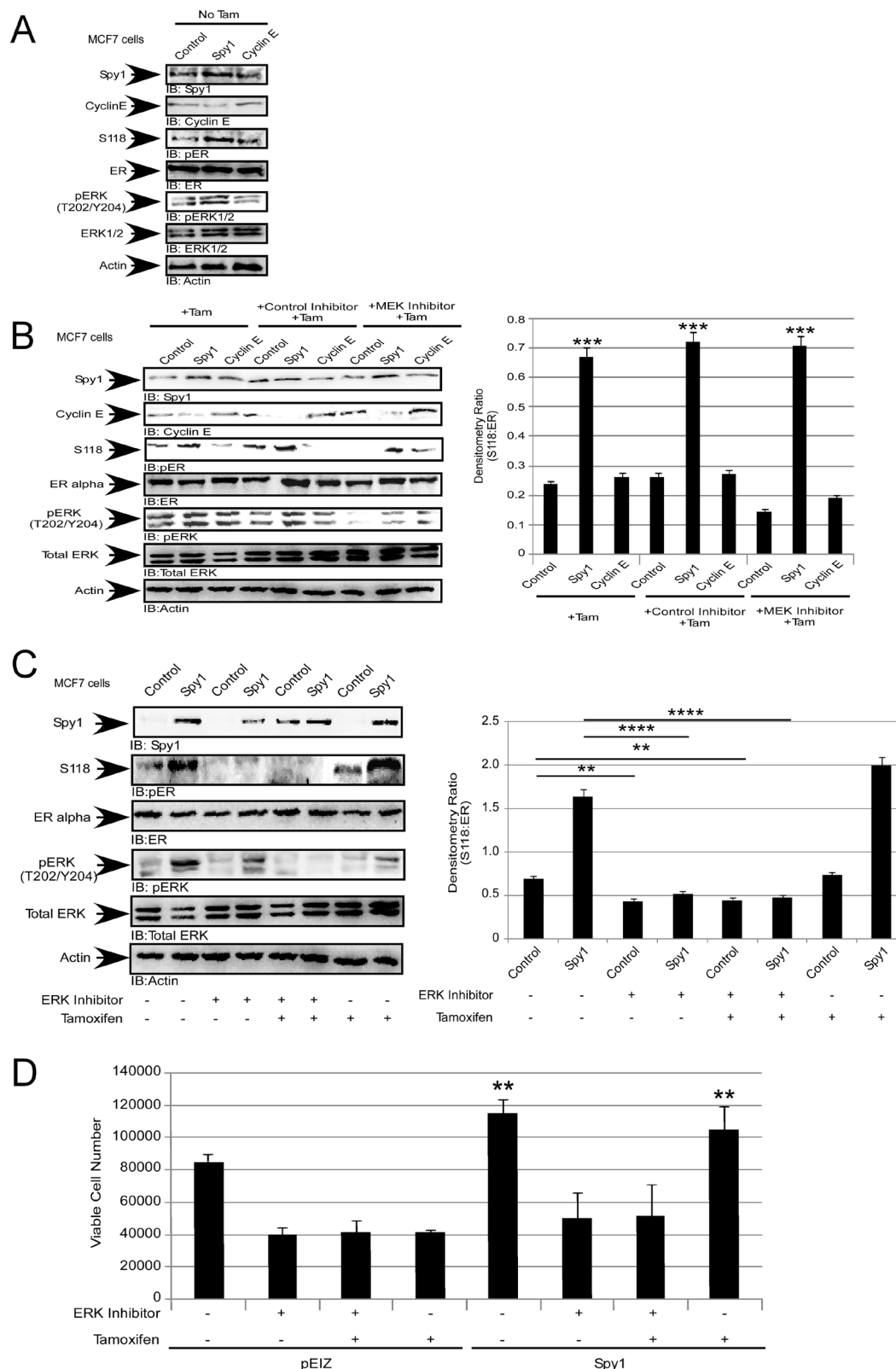


Figure 6: Spy1 levels regulate the response to tamoxifen. MCF7 cells were infected with constructs indicated at the top of each representative blot and X-axis of each densitometry graph. Drug treatments are indicated in each panel. Tamoxifen (100 nM), MEK1/2 inhibitor (10 μ M), ERK inhibitor (10 μ M) and control MEK/ERK inhibitors (10 μ M). (A) Representative blot (left) of pS118 without tamoxifen treatment. (B) Representative blot (left) and quantification of pS118 (right). (C) Representative blot (left) and quantification of pS118 (right). (D) Viable cell numbers after treatment assayed using trypan blue exclusion. Error bars reflect SE between at least 3 individual experiments. Student's *t*-test was performed; **p* < 0.05, ***p* < 0.01, ****p* < 0.001, *****p* < 0.0001.

activation that do not preclude that Cyclin E may activate ERK under specific experimental conditions.

ER α proliferative signalling in breast cancer cells is dependent upon ligand binding and/or post-translational modification to enable signalling in the absence of ligand. Post-translational modifications to ER α can render the receptor ligand-independent and resistant to anti-estrogen therapies. Phosphorylation on S118 of ER α is one such modification that can lead to tamoxifen resistance [51]. Cellular cycling influences the phosphorylation status of ER α in a manner that is dependent upon mitogen stimulation [25, 68]. In particular, phosphorylation on S118 is regulated by activated ERK1/2 [33, 34, 51]. This work demonstrates that Spy1 levels correlate with an increase in phosphorylation of S118 on ER α in a manner dependent on ERK1/2 activity, thereby providing a direct link between ER modification and the cell cycle machinery.

Lenormand et al. (1999) showed that Spy1 could activate MAPK in *Xenopus* oocytes [16]. Unlike the Lenormand data, however, Spy1 activation of ERK1/2 in the human breast cell line, MCF7, appears to be independent of MEK, and at least in part dependent on the direct interaction between Spy1 and the cell cycle inhibitor p27. Our work is not the first to show a MEK-independent activation of ERK1/2, Aksamitiene et al. (2010), have demonstrated that ERK1/2 can be activated in a MEK-independent, but PI3K/Akt-sensitive fashion, in the ER-positive breast cancer cell line T47D [69]. Our data supports that upstream pathways driven by Spy1 may

converge on an activation of the novel ERK activator RIPK2 (See Figure 7).

Mutations within Ras and Raf, or hyperactivation of MEK1/2 has spurred the production of pharmacological inhibitors targeting mediators upstream of ERK1/2; however, resistance and relapse occurs within 6 to 7 months of treatment [45]. Our findings may suggest that in some cancers with an elevated Spy1 overexpression small molecule inhibitors for MEK1/2 may be ineffective. Indeed, we have shown elevated levels of Spy1 alone can override MEK1/2 inhibitors and increase the phosphorylation status of ER on S118. Since ERK1/2 activation significantly promotes uncontrolled cell growth, survival, and invasion, determining a way to suspend ERK1/2 activation by Spy1 could have clinical implications for tamoxifen resistance and breast cancer therapies in at least subsets of patients. A significant decrease in cell viability and a concomitant decrease in phosphorylation of ER α -S118 in the presence of elevated Spy1 was seen only when ERK1/2 was directly inhibited. The discovery of a new inhibitor specifically targeting the ATP-binding site of ERK1/2 has shown promising results with respect to solid tumours [45, 46]. Indeed, our data herein shows that inhibition of ERK1/2 results in an abrogation of S118-ER α phosphorylation and a significant restoration of response to tamoxifen treatment in ER+ cells with elevated Spy1 levels. Hence, therapies focusing on the direct inhibition of ERK1/2 in ER+ patient populations harbouring elevated levels of Spy1 may represent an effective therapeutic direction for preventing/decreasing resistance to hormone therapy.

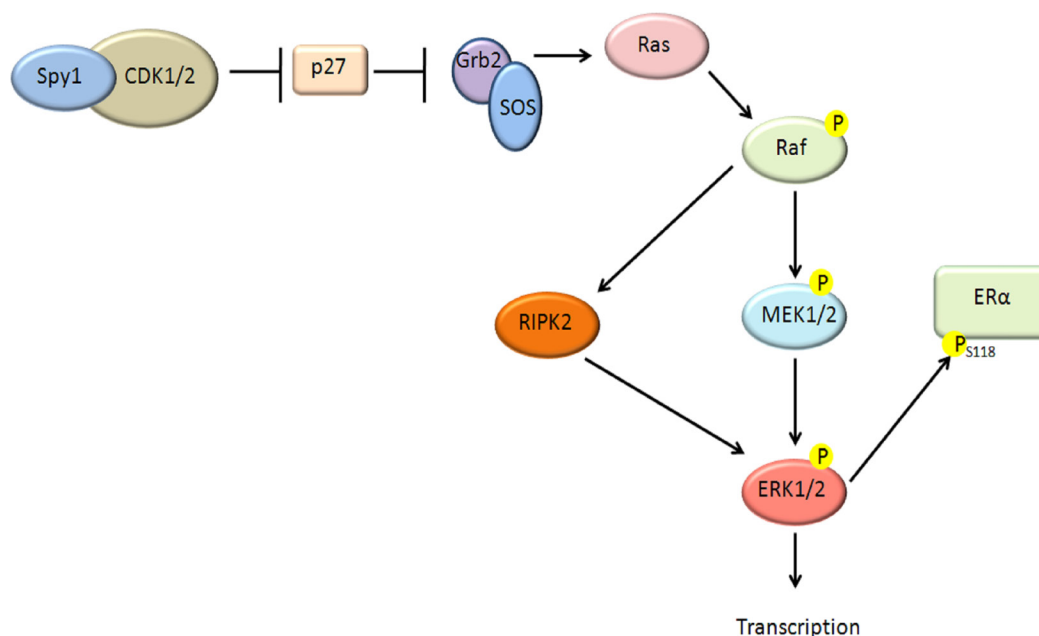


Figure 7: Schematic diagram of proposed pathway. Our data supports that elevated levels of Spy1 can act upstream to activate ERK1/2 through a MEK-independent pathway. Our data supports that this depends on a direct interaction with p27, as well as Ras and Raf activation. A novel pathway has been described demonstrating a Raf downstream kinase, RIPK2 [55] capable of activating ERK1/2 in a MEK-independent fashion. Our data shows a dependence of Spy1-mediated effects on RIPK2. Spy1-mediated ERK1/2 activation can phosphorylate the ER on S118 and alter sensitivity to tamoxifen.

MATERIALS AND METHODS

Cell culture

Human embryonic kidney (HEK)-293 and MCF7 cells were purchased from ATCC and were subcultured in DMEM media supplemented with 10% FBS and 30,000 units penicillin/30,000 µg streptomycin solution. Cells were maintained under normoxic conditions (5% CO₂) at 37°C. LCC9 cells (Lombardi Comprehensive Cancer Center, Georgetown University) were routinely subcultured in DMEM phenol red free media supplemented with 1 mM L-glutamine, 30,000 units penicillin/30,000 µg streptomycin, and 10% charcoal treated FBS. Cells were maintained under normoxic conditions (5% CO₂) at 37°C.

Plasmids

Creation of the Myc-Spy1-pCS3 was described previously [57]. Plasmids for Rc-CMV-Cyclin E (#8963), pEGFP-C1-ERα (#28230), HA-CDK1-DN (#1889), DN9 (Mek1 dominant negative; #21209), and pLKO-scrambled control (#8453) were purchased from Addgene. pLKO-shSpy1 and pLKO-shCyclin E were cloned to express a short hairpin previously described to knockdown Spy1 and Cyclin E respectively and are previously described [7]. Control pLKO contains a scrambled sequence previously described [7]. The CDK mutants D90 [17] and R170 vectors [54] have been previously described. pEIZ vector was generously donated from Dr. B. Welm (Univ. of Utah). The creation of pEIZ-Spy1 was completed by inserting Spy1 oligo into the *EcoRI* and *XbaI* sites of pEIZ.

Immunoblotting (IB)

Whole cell lysates were prepared as described previously [12] and aliquots of lysates containing 100 µg protein were subjected to electrophoresis on denaturing 10% SDS polyacrylamide gels and transferred to PVDF-Plus 0.45 micron transfer membrane (Osmonics Inc.) for 2 hours at 30 volts using a wet transfer method. Chemiluminescent Peroxidase Substrate was used for visualization following manufacturer's instruction (Pierce). Chemiluminescence was quantified on an AlphaInnotech HD2 (Fisher) using AlphaEase FC software.

Antibodies

Actin was purchased from Chemicon-Millipore (MAB150 1R). Spy1 was purchased from ThermoScientific (PA5-29417). c-Myc (9E10, C3956) and secondary rabbit and mouse antibodies were purchased from Sigma. Phospho-ERα-S118 (ab32396), Cyclin E1 (ab33911), phospho-Raf1 (ab135559), p27 (ab7961), anti-ERK1 (phospho T202) + ERK2 (phospho T185) (ab201015), and anti-ERK1 (phospho Y204) + ERK2 (phospho Y187)

(ab47339) were purchased from Abcam. ERα (sc-543), RIPK2 (sc-8610), ERK1/2 (sc-154), MKP1 (sc-271684), MKP2 (sc-1200), MKP3 (sc-8598), PP2A (sc-6110), and Raf1 (sc-7267) were purchased from Santa Cruz Biotechnology. Phospho-ERK 1/2 (Thr 202/Tyr 204) was purchased from Cell Signaling (4370).

Transfection/infection

Transfection

Cells were transfected using polyethylenimine (PEI) branched reagent (Sigma, 408727). In brief, 10 µg of DNA was mixed with 3 µl of 10 mg/ml PEI for 10 minutes then added to a 10 cm tissue culture plate. Transfection media was changed after 24 hours.

Infection

8000 cells were seeded in fully supplemented growth media in 96-well plates for 2 hours. Cells were starved by removing serum and penicillin/streptomycin from the media, followed by the use of 1 mg/ml polybrene (Santa Cruz, sc-134220) and MOI 3 of the specific vector used. Infected media was changed to fully supplemented media 24 hours after infection. For knockdown, cells were incubated with 1 mg/ml puromycin (Sigma, P8833) 48 hours after infection for 72 hours to allow for puromycin selection. Media is thereafter changed every 48 hours with puromycin included.

Inhibition treatments

HEK-293 cells were seeded equally in 10 cm dishes at a density of 5×10^5 cells. Upon 80% confluency, HEK-293 cells were incubated with either 10 µM SB202474 (control; EMD Millipore, 559387) or 10 µM U0126 (MEK 1/2; EMD Millipore, 662005) inhibitors for 1 hour. For Raf inhibition, 5 µM GW5074 (Sigma, G6416) was added to the cells for 24 hours. For Ras inhibition, 20 µM Farnesyl Thiosalicylic Acid (Santa Cruz, sc-205322) was added to the cells for 24 hours. For ERK1/2 inhibition, 10 µM SCH772984 (ApexBio, A3805) was added to the cells for 1 hour prior to treatment with tamoxifen (Sigma, H7904) for 24 hours. Following drug treatment, cells were either analyzed using trypan blue analysis or pelleted, lysed and analyzed using 10% SDS-PAGE.

Estradiol treatments

MCF7 were seeded equally in 10 cm dishes at a density of 5×10^5 cells. Upon 70% confluency, the cells were treated with phenol red-free RPMI media, supplemented with 10% charcoal treated FBS and 30,000 units penicillin/streptomycin. After 48 hours, cells were incubated with either dimethyl sulfoxide (DMSO) or 50 ng/ml E2 (Sigma, E8875) for specified time points, followed by cell harvesting for protein extraction and IB.

Animal care and handling

Wildtype Zebrafish (*Danio rerio*) were handled in compliance with local animal care regulations and standard protocols of Canada and following the University of Windsor animal care protocol #12–14. Adult fish were kept at 28.5°C and bred according to available protocols [56].

Implantation and treatment

Eggs were collected after fertilization and kept in E3 embryo media (5 mM NaCl, 0.17 mM KCl, 0.33 mM CaCl₂, 0.33 mM MgSO₄, 10⁻⁵% Methylene Blue) at 32°C in an incubator until ready to inject. Before injection 200,000 cells were reconstituted in 200 µL of serum-free media and labelled with 1 µL of DiO (green) (Vybrant, Invitrogen) at 37°C for 20 minutes. Cells were washed with 200 µL of serum free media twice and resuspended in 20 µL of serum free media, kept at 37°C for 20 minutes, and placed on ice until injection. 48 hours post-fertilization (hpf) the embryos were dechorionated with fine tip forceps and anesthetised with 0.168 mg/ml of Tricaine (Sigma, MS222). 50–100 labelled cells/ 9 nL were loaded into glass capillary needles and injected into the yolk sac of each embryo using a Nanoject II (Fisher Scientific). After injection, embryos were placed in E3 embryo media and 2 hours post-implantation (hpi) were examined using a Leica fluorescence stereoscope to exclude any embryo with cells outside of the implantation area. Mortalities due to injection will also be evident at this time point for exclusion (~5–15%). 24 hpi (0 hours post-treatment (hpt)) the embryos were anesthetized, imaged and placed in a 96-well plate; one embryo per well. At 48 hpi the embryos were treated with either DMSO or 10 µM tamoxifen. The embryos were imaged at 0 hpt and 24 hpt and the fold change in tumour foci were quantified by total fluorescence.

Image analysis

The fish were imaged before and after treatment with Tamoxifen and DMSO. The image for each embryo was imported into ImageJ, the image was converted to a 32-bit greyscale, and the threshold was adjusted to eliminate background pixels. Total area of fluorescence was measured as the tumour area and the ‘particle analysis’ function was used to calculate number of tumour foci. Using automated software we aligned the site of injection over multiple fish to determine overall changes in the distance that tumour foci are detected from injection site. All measured results were copied into Excel files and fold change in tumour area and tumour foci calculated from 24 to 72 hpi.

ACKNOWLEDGMENTS

We thank J. Maimaiti for production of lentiviral plasmids and technical support, Annie Semaan for

technical assistance, and Dr. B. Welm (University of Utah) for donating the pEIZ plasmid.

CONFLICTS OF INTEREST

We have no conflicts to report.

GRANT SUPPORT

R-MF acknowledges scholarship support from the Canadian Breast Cancer Foundation. JT was supported by a Mitacs Accelerate Studentship. This study was supported by operating funds from the Canadian Institutes of Health Research (CIHR) #142189.

REFERENCES

1. Siegel R, DeSantis C, Virgo K, Stein K, Mariotto A, Smith T, Cooper D, Gansler T, Lerro C, Fedewa S, Lin C, Leach C, Cannady RS, et al. Cancer treatment and survivorship statistics, 2012. *CA Cancer J Clin*. 2012; 62:220–241.
2. Hackshaw A, Roughton M, Forsyth S, Monson K, Reczko K, Sainsbury R, Baum M. Long-term benefits of 5 years of tamoxifen: 10-year follow-up of a large randomized trial in women at least 50 years of age with early breast cancer. *J Clin Oncol*. 2011; 29:1657–1663.
3. Viani GA, Afonso SL, Stefano EJ, De Fendi LI, Soares FV. Adjuvant trastuzumab in the treatment of her-2-positive early breast cancer: a meta-analysis of published randomized trials. *BMC Cancer*. 2007; 7:153.
4. Barnes EA, Porter LA, Lenormand JL, Dellinger RW, Donoghue DJ. Human Spy1 promotes survival of mammalian cells following DNA damage. *Cancer Res*. 2003; 63:3701–3707.
5. Gastwirt RF, Slavin DA, McAndrew CW, Donoghue DJ. Spy1 expression prevents normal cellular responses to DNA damage: inhibition of apoptosis and checkpoint activation. *J Biol Chem*. 2006; 281:35425–35435.
6. Ke Q, Ji J, Cheng C, Zhang Y, Lu M, Wang Y, Zhang L, Li P, Cui X, Chen L, He S, Shen A. Expression and prognostic role of Spy1 as a novel cell cycle protein in hepatocellular carcinoma. *Exp Mol Pathol*. 2009; 87:167–172.
7. Lubanska D, Porter LA. The atypical cell cycle regulator Spy1 suppresses differentiation of the neuroblastoma stem cell population. *Oncoscience*. 2014; 1:336–348. doi: 10.18632/oncoscience.36.
8. Porter LA, Kong-Beltran M, Donoghue DJ. Spy1 interacts with p27Kip1 to allow G1/S progression. *Mol Biol Cell*. 2003; 14:3664–3674.
9. Lubanska D, Market-Velker BA, deCarvalho AC, Mikkelsen T, Fidalgo da Silva E, Porter LA. The cyclin-like protein Spy1 regulates growth and division characteristics of the CD133+ population in human glioma. *Cancer Cell*. 2014; 25:64–76.

10. Lubanska D, Porter LA. Atypical cell cycle control over neural cell fate. *Cell Cycle*. 2014; 13:2987.
11. Zucchi I, Mento E, Kuznetsov VA, Scotti M, Valsecchi V, Simionati B, Vicinanza E, Valle G, Pilotti S, Reinbold R, Vezzoni P, Albertini A, Dulbecco R. Gene expression profiles of epithelial cells microscopically isolated from a breast-invasive ductal carcinoma and a nodal metastasis. *Proc Natl Acad Sci USA*. 2004; 101:18147–18152.
12. Al Sorkhy M, Ferraiuolo RM, Jalili E, Malysa A, Fratiliou AR, Sloane BF, Porter LA. The cyclin-like protein Spy1/RINGO promotes mammary transformation and is elevated in human breast cancer. *BMC Cancer*. 2012; 12:45.
13. Golipour A, Myers D, Seagroves T, Murphy D, Evan GI, Donoghue DJ, Moorehead RA, Porter LA. The Spy1/RINGO family represents a novel mechanism regulating mammary growth and tumorigenesis. *Cancer Res*. 2008; 68:3591–3600.
14. Dinarina A, Santamaria PG, Nebreda AR. Cell cycle regulation of the mammalian CDK activator RINGO/Speedy A. *FEBS Lett*. 2009; 583:2772–2778.
15. Ferby I, Blazquez M, Palmer A, Eritja R, Nebreda AR. A novel p34(cdc2)-binding and activating protein that is necessary and sufficient to trigger G(2)/M progression in *Xenopus* oocytes. *Genes Dev*. 1999; 13:2177–2189.
16. Lenormand JL, Dellinger RW, Knudsen KE, Subramani S, Donoghue DJ. Speedy: a novel cell cycle regulator of the G2/M transition. *EMBO J*. 1999; 18:1869–1877.
17. Cheng A, Gerry S, Kaldis P, Solomon MJ. Biochemical characterization of Cdk2-Speedy/Ringo A2. *BMC Biochem*. 2005; 6:19.
18. Karaïskou A, Perez LH, Ferby I, Ozon R, Jessus C, Nebreda AR. Differential regulation of Cdc2 and Cdk2 by RINGO and cyclins. *J Biol Chem*. 2001; 276:36028–36034.
19. McAndrew CW, Gastwirt RF, Meyer AN, Porter LA, Donoghue DJ. Spy1 enhances phosphorylation and degradation of the cell cycle inhibitor p27. *Cell Cycle*. 2007; 6:1937–1945.
20. Klinge CM, Jernigan SC, Smith SL, Tyulmenkov VV, Kulakosky PC. Estrogen response element sequence impacts the conformation and transcriptional activity of estrogen receptor alpha. *Mol Cell Endocrinol*. 2001; 174:151–166.
21. Barone I, Brusco L, Fuqua SA. Estrogen receptor mutations and changes in downstream gene expression and signaling. *Clin Cancer Res*. 2010; 16:2702–2708.
22. Castro-Rivera E, Samudio I, Safe S. Estrogen regulation of cyclin D1 gene expression in ZR-75 breast cancer cells involves multiple enhancer elements. *J Biol Chem*. 2001; 276:30853–30861.
23. Gottlicher M, Heck S, Herrlich P. Transcriptional cross-talk, the second mode of steroid hormone receptor action. *J Mol Med (Berl)*. 1998; 76:480–489.
24. Musgrove EA, Hamilton JA, Lee CS, Sweeney KJ, Watts CK, Sutherland RL. Growth factor, steroid, and steroid antagonist regulation of cyclin gene expression associated with changes in T-47D human breast cancer cell cycle progression. *Mol Cell Biol*. 1993; 13:3577–3587.
25. Planas-Silva MD, Weinberg RA. Estrogen-dependent cyclin E-cdk2 activation through p21 redistribution. *Mol Cell Biol*. 1997; 17:4059–4069.
26. Levin ER. Integration of the extranuclear and nuclear actions of estrogen. *Mol Endocrinol*. 2005; 19:1951–1959.
27. Likhite VS, Stossi F, Kim K, Katzenellenbogen BS, Katzenellenbogen JA. Kinase-specific phosphorylation of the estrogen receptor changes receptor interactions with ligand, deoxyribonucleic acid, and coregulators associated with alterations in estrogen and tamoxifen activity. *Mol Endocrinol*. 2006; 20:3120–3132.
28. Fujita T, Kobayashi Y, Wada O, Tateishi Y, Kitada L, Yamamoto Y, Takashima H, Murayama A, Yano T, Baba T, Kato S, Kawabe Y, Yanagisawa J. Full activation of estrogen receptor alpha activation function-1 induces proliferation of breast cancer cells. *J Biol Chem*. 2003; 278:26704–26714.
29. Connor CE, Norris JD, Broadwater G, Willson TM, Gottardis MM, Dewhirst MW, McDonnell DP. Circumventing tamoxifen resistance in breast cancers using antiestrogens that induce unique conformational changes in the estrogen receptor. *Cancer Res*. 2001; 61:2917–2922.
30. Chen D, Washbrook E, Sarwar N, Bates GJ, Pace PE, Thirunuvakkarasu V, Taylor J, Epstein RJ, Fuller-Pace FV, Egly JM, Coombes RC, Ali S. Phosphorylation of human estrogen receptor alpha at serine 118 by two distinct signal transduction pathways revealed by phosphorylation-specific antisera. *Oncogene*. 2002; 21:4921–4931.
31. Kato S, Endoh H, Masuhiro Y, Kitamoto T, Uchiyama S, Sasaki H, Masushige S, Gotoh Y, Nishida E, Kawashima H, Metzger D, Chambon P. Activation of the estrogen receptor through phosphorylation by mitogen-activated protein kinase. *Science*. 1995; 270:1491–1494.
32. Bunone G, Briand PA, Miksicek RJ, Picard D. Activation of the unliganded estrogen receptor by EGF involves the MAP kinase pathway and direct phosphorylation. *EMBO J*. 1996; 15:2174–2183.
33. Chen M, Cui YK, Huang WH, Man K, Zhang GJ. Phosphorylation of estrogen receptor alpha at serine 118 is correlated with breast cancer resistance to tamoxifen. *Oncol Lett*. 2013; 6:118–124.
34. Cheng J, Zhang C, Shapiro DJ. A functional serine 118 phosphorylation site in estrogen receptor-alpha is required for down-regulation of gene expression by 17beta-estradiol and 4-hydroxytamoxifen. *Endocrinology*. 2007; 148:4634–4641.
35. Yamashita H, Nishio M, Toyama T, Sugiura H, Kondo N, Kobayashi S, Fujii Y, Iwase H. Low phosphorylation of estrogen receptor alpha (ERalpha) serine 118 and high phosphorylation of ERalpha serine 167 improve survival in ER-positive breast cancer. *Endocr Relat Cancer*. 2008; 15:755–763.
36. Filardo EJ, Quinn JA, Bland KI, Frackelton AR, Jr. Estrogen-induced activation of Erk-1 and Erk-2 requires

the G protein-coupled receptor homolog, GPR30, and occurs via trans-activation of the epidermal growth factor receptor through release of HB-EGF. *Mol Endocrinol*. 2000; 14:1649–1660.

37. Falkenstein E, Tillmann HC, Christ M, Feuring M, Wehling M. Multiple actions of steroid hormones—a focus on rapid, nongenomic effects. *Pharmacol Rev*. 2000; 52:513–556.
38. Belcher SM, Zsarnovszky A. Estrogenic actions in the brain: estrogen, phytoestrogens, and rapid intracellular signaling mechanisms. *J Pharmacol Exp Ther*. 2001; 299:408–414.
39. Sarwar N, Kim JS, Jiang J, Peston D, Sinnett HD, Madden P, Gee JM, Nicholson RI, Lykkesfeldt AE, Shousha S, Coombes RC, Ali S. Phosphorylation of ERalpha at serine 118 in primary breast cancer and in tamoxifen-resistant tumours is indicative of a complex role for ERalpha phosphorylation in breast cancer progression. *Endocr Relat Cancer*. 2006; 13:851–861.
40. Thomas RS, Sarwar N, Phoenix F, Coombes RC, Ali S. Phosphorylation at serines 104 and 106 by Erk1/2 MAPK is important for estrogen receptor-alpha activity. *J Mol Endocrinol*. 2008; 40:173–184.
41. Giltane JM, Balko JM. Rationale for targeting the Ras/ MAPK pathway in triple-negative breast cancer. *Discov Med*. 2014; 17:275–283.
42. Huynh H, Nguyen TT, Chow KH, Tan PH, Soo KC, Tran E. Over-expression of the mitogen-activated protein kinase (MAPK) kinase (MEK)-MAPK in hepatocellular carcinoma: its role in tumor progression and apoptosis. *BMC Gastroenterol*. 2003; 3:19.
43. Emery CM, Vijayendran KG, Zipser MC, Sawyer AM, Niu L, Kim JJ, Hatton C, Chopra R, Oberholzer PA, Karpova MB, MacConaill LE, Zhang J, Gray NS, et al. MEK1 mutations confer resistance to MEK and B-RAF inhibition. *Proc Natl Acad Sci USA*. 2009; 106:20411–20416.
44. Villanueva J, Infante JR, Krepler C, Reyes-Urbe P, Samanta M, Chen HY, Li B, Swoboda RK, Wilson M, Vultur A, Fukunaba-Kalabis M, Wubbenhorst B, Chen TY, et al. Concurrent MEK2 mutation and BRAF amplification confer resistance to BRAF and MEK inhibitors in melanoma. *Cell Rep*. 2013; 4:1090–1099.
45. Morris EJ, Jha S, Restaino CR, Dayananth P, Zhu H, Cooper A, Carr D, Deng Y, Jin W, Black S, Long B, Liu J, Dinunzio E, et al. Discovery of a novel ERK inhibitor with activity in models of acquired resistance to BRAF and MEK inhibitors. *Cancer Discov*. 2013; 3:742–750.
46. Hatzivassiliou G, Liu B, O'Brien C, Spoerke JM, Hoefflich KP, Haverty PM, Soriano R, Forrest WF, Heldens S, Chen H, Toy K, Ha C, Zhou W, et al. ERK inhibition overcomes acquired resistance to MEK inhibitors. *Mol Cancer Ther*. 2012; 11:1143–1154.
47. Carlino MS, Todd JR, Gowrishankar K, Mijatov B, Pupo GM, Fung C, Snoyman S, Hersey P, Long GV, Kefford RF, Rizos H. Differential activity of MEK and ERK inhibitors in BRAF inhibitor resistant melanoma. *Mol Oncol*. 2014; 8:544–554.
48. Infante JR, Janku F, Tolcher AW, Patel MR, Sullivan RJ, Flaherty K, Carvajal RD, Varghese AM, Wong DJL, Sznol M, Sosman JA, Wang-Gillam A, Burris HA, et al. Dose escalation stage of a first-in-class phase I study of the novel oral ERK1/2 kinase inhibitor BVD-523 (ulixertinib) in patients with advanced solid tumors. *J Clin Oncol*. 2015; suppl abstr 2506.
49. Grolli S, Accornero P, Ramoni R, Donofrio G, Whitelaw CB. Expression of c-myc is down-regulated as mouse mammary epithelial cells become confluent. *Biochem Biophys Res Commun*. 1997; 239:566–569.
50. Wang C, Mayer JA, Mazumdar A, Fertuck K, Kim H, Brown M, Brown PH. Estrogen induces c-myc gene expression via an upstream enhancer activated by the estrogen receptor and the AP-1 transcription factor. *Mol Endocrinol*. 2011; 25:1527–1538.
51. Chen D, Riedl T, Washbrook E, Pace PE, Coombes RC, Egly JM, Ali S. Activation of estrogen receptor alpha by S118 phosphorylation involves a ligand-dependent interaction with TFIID and participation of CDK7. *Mol Cell*. 2000; 6:127–137.
52. Raman M, Chen W, Cobb MH. Differential regulation and properties of MAPKs. *Oncogene*. 2007; 26:3100–3112.
53. Moeller SJ, Head ED, Sheaff RJ. p27Kip1 inhibition of GRB2-SOS formation can regulate Ras activation. *Mol Cell Biol*. 2003; 23:3735–3752.
54. Al Sorkhy M, Fifield BA, Myers D, Porter LA. Direct interactions with both p27 and Cdk2 regulate Sp1-mediated proliferation *in vivo* and *in vitro*. *Cell Cycle*. 2016; 15:128–136.
55. Navas TA, Baldwin DT, Stewart TA. RIP2 is a Raf1-activated mitogen-activated protein kinase kinase. *J Biol Chem*. 1999; 274:33684–33690.
56. Riggins RB, Schrecengost RS, Guerrero MS, Bouton AH. Pathways to tamoxifen resistance. *Cancer Lett*. 2007; 256:1–24.
57. Porter LA, Dellinger RW, Tynan JA, Barnes EA, Kong M, Lenormand JL, Donoghue DJ. Human Speedy: a novel cell cycle regulator that enhances proliferation through activation of Cdk2. *J Cell Biol*. 2002; 157:357–366.
58. Amatrua JF, Shepard JL, Stern HM, Zon LI. Zebrafish as a cancer model system. *Cancer Cell*. 2002; 1:229–231.
59. Kari G, Rodeck U, Dicker AP. Zebrafish: an emerging model system for human disease and drug discovery. *Clin Pharmacol Ther*. 2007; 82:70–80.
60. Parnig C, Seng WL, Semino C, McGrath P. Zebrafish: a preclinical model for drug screening. *Assay Drug Dev Technol*. 2002; 1:41–48.
61. Lam SH, Lee SG, Lin CY, Thomsen JS, Fu PY, Murthy KR, Li H, Govindarajan KR, Nick LC, Bourque G, Gong Z, Lufkin T, Liu ET, et al. Molecular conservation of estrogen-response associated with cell cycle regulation, hormonal carcinogenesis and cancer in zebrafish and human cancer cell lines. *BMC Med Genomics*. 2011; 4:41.

62. Teng Y, Xie X, Walker S, White DT, Mumm JS, Cowell JK. Evaluating human cancer cell metastasis in zebrafish. *BMC Cancer*. 2013; 13:453.
63. Brunner N, Boysen B, Jirus S, Skaar TC, Holst-Hansen C, Lippman J, Frandsen T, Spang-Thomsen M, Fuqua SA, Clarke R. MCF7/LCC9: an antiestrogen-resistant MCF-7 variant in which acquired resistance to the steroidal antiestrogen ICI 182,780 confers an early cross-resistance to the nonsteroidal antiestrogen tamoxifen. *Cancer Res*. 1997; 57:3486–3493.
64. Doisneau-Sixou SF, Sergio CM, Carroll JS, Hui R, Musgrove EA, Sutherland RL. Estrogen and antiestrogen regulation of cell cycle progression in breast cancer cells. *Endocr Relat Cancer*. 2003; 10:179–186.
65. Foster JS, Wimalasena J. Estrogen regulates activity of cyclin-dependent kinases and retinoblastoma protein phosphorylation in breast cancer cells. *Mol Endocrinol*. 1996; 10:488–498.
66. Prall OW, Sarcevic B, Musgrove EA, Watts CK, Sutherland RL. Estrogen-induced activation of Cdk4 and Cdk2 during G1-S phase progression is accompanied by increased cyclin D1 expression and decreased cyclin-dependent kinase inhibitor association with cyclin E-Cdk2. *J Biol Chem*. 1997; 272:10882–10894.
67. Shi T, Gao Y, Gaffrey MJ, Nicora CD, Fillmore TL, Chrisler WB, Gritsenko MA, Wu C, He J, Bloodsworth KJ, Zhao R, Camp DG, 2nd, Liu T, et al. Sensitive targeted quantification of ERK phosphorylation dynamics and stoichiometry in human cells without affinity enrichment. *Anal Chem*. 2015; 87:1103–1110.
68. Barone M, Ladisa R, Di Leo A, Spano D, Francioso D, Aglio V, Amoruso A, Francavilla A, Iolascon A. Estrogen-induced proliferation in cultured hepatocytes involves cyclin D1, p21(Cip1) and p27(Kip1). *Dig Dis Sci*. 2006; 51:580–586.
69. Aksamitiene E, Kholodenko BN, Kolch W, Hoek JB, Kiyatkin A. PI3K/Akt-sensitive MEK-independent compensatory circuit of ERK activation in ER-positive PI3K-mutant T47D breast cancer cells. *Cell Signal*. 2010; 22:1369–1378.